

Non si può descrivere la
passione...
La si può solo vivere.

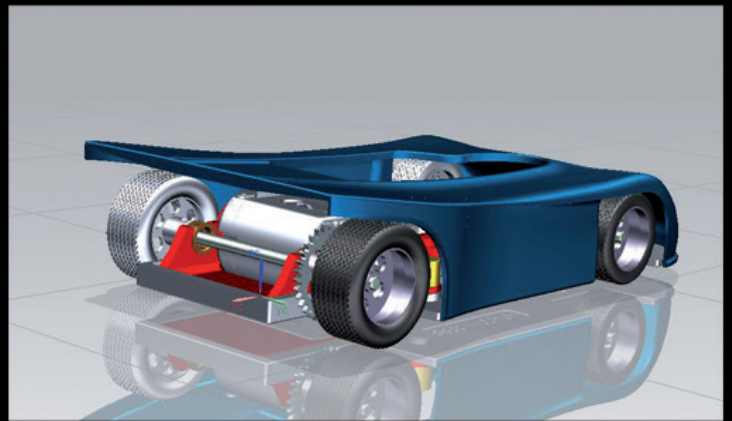
*You can't describe the
passion...
You can only live it.*



NSFR

PORSCHE 908/3

Competition Slot car 1/32



Coming soon





1/32 MODELS GT SERIES

BOX STOCK CONFIGURATION

ANGLEWINDER



Models	Configuration	Motor	Magnet	Gear	Pinion
Mosler MT 900R	AW - IL	King EVO/3	Neodimium	31 AW - 27 IL	13 AW - 10 IL
Porsche 997 GT3	AW	King EVO/3	Neodimium	31	13
Audi R8 LMS	AW	King EVO/3	Neodimium	31	13
Corvette C6R	AW	King EVO/3	Neodimium	31	13
ASV GT3	AW	King EVO/3	Neodimium	31	13
BMW Z4	AW	King EVO/3	Neodimium	31	13
Corvette C7R	AW	King EVO/3	Neodimium	31	13

CORVETTE C7R

0022AW



Corvette C7R
Test car "Red"



00XXAW

Corvette C7R
24h Le Mans 2014 #73



00XXAW

Corvette C7R
24h Le Mans 2016 #74



00XXAW

Corvette C7R
24h Le Mans 2016 #57



MOSLER MT900 R

ANGLEWINDER - INLINE



ANGLEWINDER CONFIGURATION



INLINE CONFIGURATION

0031AW - 0031IL



Mosler MT900 R

Blancpain Sprint Series 2005 #101



00XXAW - 00XXIL

PROTOTYPE

Mosler MT900 R

Daytona 2002 #24



PORSCHE 997 GT3

00XXAW

Porsche 997
24h Le Mans 2007 #76
Matmut



AUDI R8 LMS

00XXAW

Audi R8 LMS
Brazilian GT Championship 2013 #20
Ebrahim Motors



00XXAW

Audi R8 LMS
Nurburgring 2012 #40
ADAC GT Masters



BMW Z4

0032AW

PROTOTYPE

BMW Z4
Gulf #025

LIMITED EDITION



00XXAW

BMW Z4
Silverstone 2012 #36



ASV GT3

00XXAW

PROTOTYPE

ASV GT3
Macau 2015 #55
FIA GT World Cup



00XXAW

PROTOTYPE

ASV GT3
24h Le Mans 2015 #95 - #96
Gulf Edition



CORVETTE C6R

00XXAW

Corvette C6R
Malisped #37



COMPLETE MODELS WITH BODY KIT TO BE PAINTED

CORVETTE C7R



0052AW

ASV GT3



1158AW

PORSCHE 997



1072AW 997 RSR
1062AW Rally

AUDI R8 LMS



1097AW

CORVETTE C6R



1071AW

MOSLER MT900 R



1133AW-W	White	1133AW-R	Red
1133AW-B	Blue	1133AW-Y	Yellow
1133AW-O	Orange		

BMW Z4

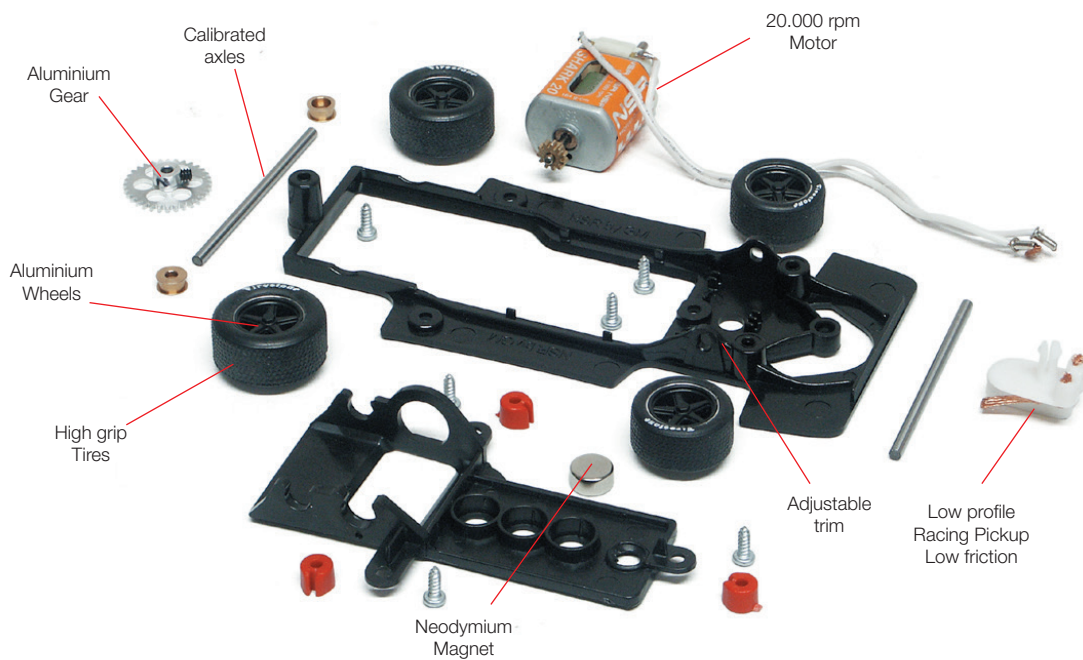


1196AW

1/32 MODELS CLASSIC SERIES

BOX STOCK CONFIGURATION

SIDEWINDER



Models	Configuration	Motor	Magnet	Gear	Pinion
Ford MK IV	SW	Shark 20	Neodymium	32	11
Porsche 917 K	SW	Shark 20	Neodymium	32	11
P68 Allan Mann	SW	Shark 20	Neodymium	32	11
Ford MK I / MK II GT40	SW	Shark 20	Neodymium	32	11
Porsche 908/3	SW	Shark 20	Neodymium	32	11
Abarth 500 Assetto Corsa	SW	Shark 20	Neodymium	32	11

FORD MK IV

00XXSW

PROTOTYPE

Ford MK IV J9
Goodwood Revival #9



00XXSW

Ford MK IV
Revival #16



Porsche 917K

00XXSW

PROTOTYPE

Porsche 917K
24h Daytona 1970 #3



00XXSW

Porsche 917K
Revival #7
Verva Street Racing 2011

LIMITED EDITION



P68 ALLAN MANN

00XXSW

PROTOTYPE

P68 Allan Mann
Brands Hatch 1968 #34



Ford MK I GT40

00XXSW

PROTOTYPE

Ford MK I GT40
24h Le Mans 1969 #68



COMPLETE MODELS WITH BODY KIT TO BE PAINTED

FORD MK IV



1023SW

PORSCHE 917K



1033SW
1132SW double fin

P68 ALLAN MANN



1050SW

FORD GT40



1066SW - MK II
1188SW - MK I

ABARTH 500 ASSETTO CORSA

0033SW

PROTOTYPE

Abarth 500 Assetto Corsa

Martini #224



00XXSW

Abarth 500 Assetto Corsa

Trofeo Abarth Selenia #7



ABARTH 500



1051SW-W	White	1051SW-R	Red
1051SW-BI	Blue	1051SW-BK	Black
1051SW-C	Cream		

RENAULT CLIO



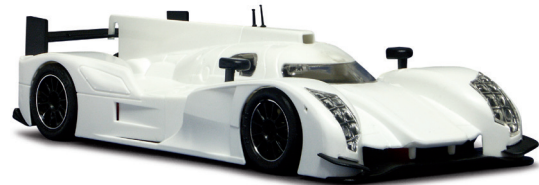
1016AW-W	White	1035IL-W	White
1016AW-G	Green	1035IL-G	Green
1016AW-R	Red	1035IL-R	Red
1016AW-B	Black	1035IL-B	Black

ABARTH S2000

1043AW
1143IL

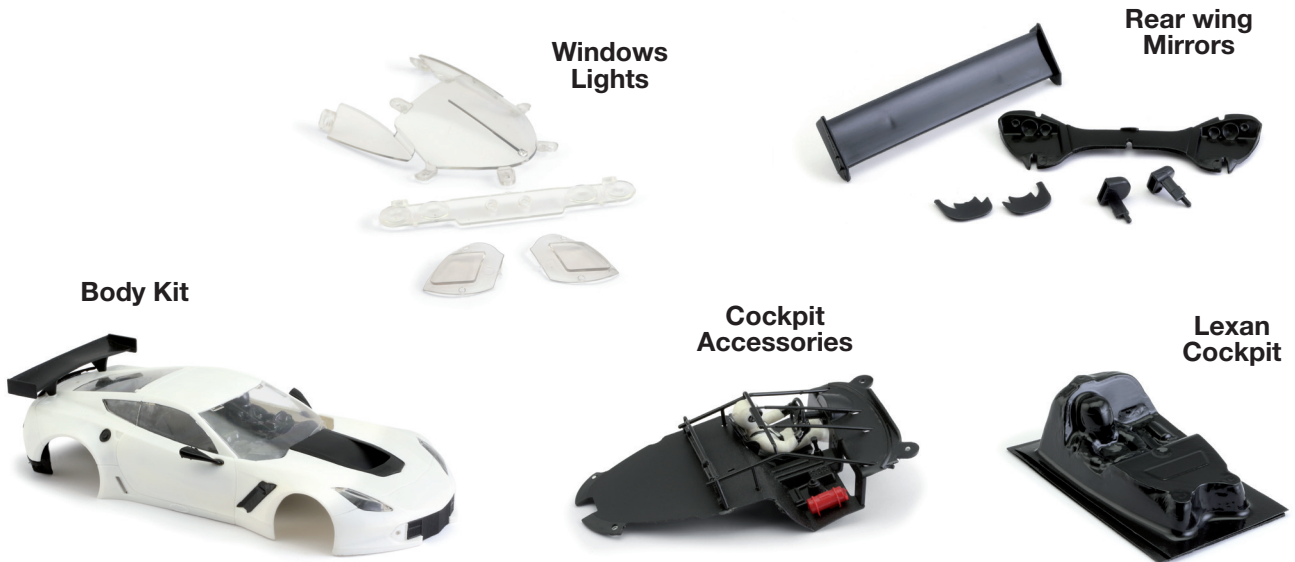


AUDI R18 TDI



1096IL

COMPLETE BODY KIT BODY ACCESSORIES



Models		Body Kit	Windows Lights	Rear wing Mirrors	Cockpit Accessories	Lexan Cockpit
Mosler MT 900R	Blue	1320B	1303	1302	1307	1390
	Orange	1320O				
	Red	1320R				
	Yellow	1320Y				
	White	1320W				
Porsche 997 GT3		1381	1377	1378	1379	1380
Audi R8 LMS		1408	1404	1405	1406	1407
Corvette C6R		1389	1385	1386	1387	1388
ASV GT3		1443	1440	1441	1442	
BMW Z4		1468	1465	1466	1467	
Corvette C7R		1498	1496	1495	1497	
Audi R18 TDI LMP		1418	1414	1415	1416	1417
Ford MK IV		1361	1324		1325	
Porsche 917K		1349			1342	
Porsche 917K double fin		1423	1341			
P68 Alan Mann		1364	1353		1354	
Ford MK II GT40		1373			1372	1409
Ford MK I GT40		1452	1371			
Abarth 500	Black	1363-BK	1358	1359	1360	
	Blue	1363-B				
	Cream	1363-C				
	Red	1363-R				
	White	1363-W				
Renault Clio	Black	1328B	1312	1313	1314	1319
	Green	1328G		Air scope + Front grills		
	Red	1328R		1315		
	White	1328W				
Abarth S2000		1362	1346	1347	1348	

CHASSIS

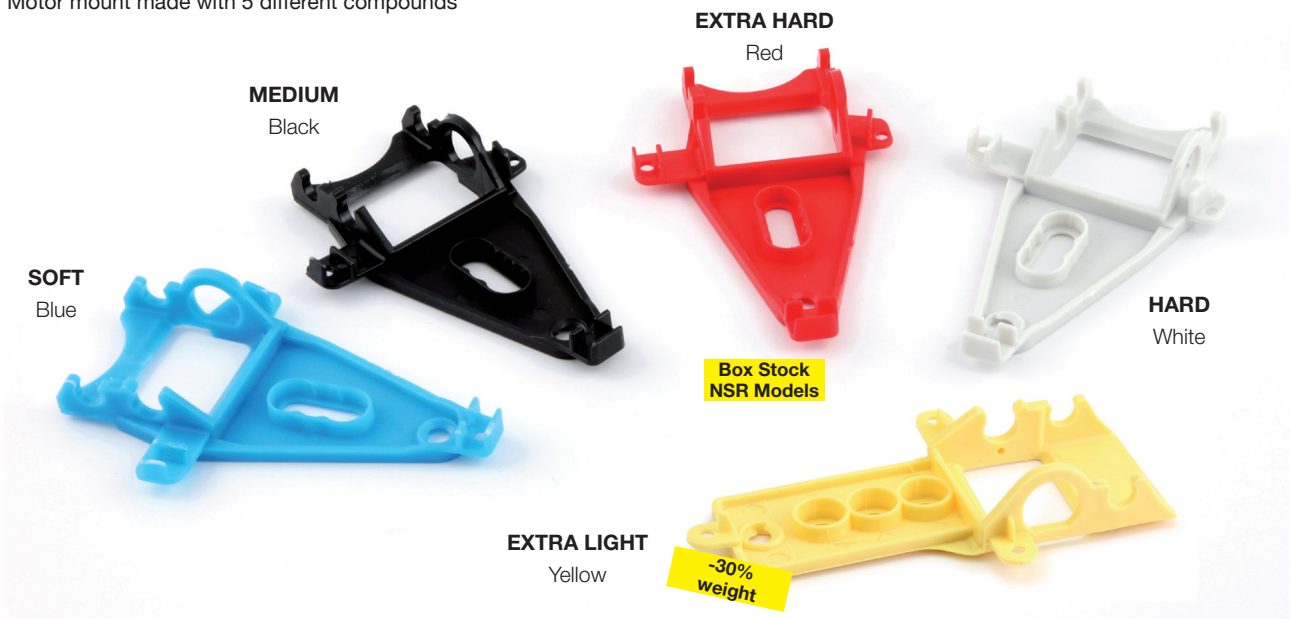
Chassis made with 5 different compounds



Models	Extra Hard	Hard	Medium	Soft	Extra Light
Mosler MT 900R - EVO 3	1480	1367	1366	1365	1391
Mosler MT 900R - EVO 4			1421		
Mosler MT 900R - EVO 5	1481	1451	1450	1449	1448
Porsche 997 GT3	1485	1471	1470	1469	
Audi R8 LMS	1486	1475	1474	1473	1472
Corvette C6R	1487	1455	1453	1454	1456
ASV GT3	1488	1459	1457	1458	1460
BMW Z4	1489	1463	1461	1462	1464
Corvette C7R	1494	1492	1490	1493	1491
Audi R18 TDI LMP	1482	1413	1412	1411	1410
Ford MK IV	1476	1429	1428	1427	
Porsche 917K	1478	1426	1425	1424	
P68 Alan Mann	1479	1432	1431	1430	
Ford MK I / II GT40	1477	1435	1434	1433	
Abarth 500	1483	1357	1356	1355	
Renault Clio - Abarth S2000	1484	1438	1437	1436	1439

MOTOR MOUNT

Motor mount made with 5 different compounds



BOX STOCK NSR

ANGLEWINDER

Standard equipments:
NSR GT - Rally Series




Anglewinder motor support

1259	Red	Extra Hard
1257	Black	Medium
1258	White	Hard
1260	Yellow	Extra Light
1261	Blue	Soft

SIDEWINDER

Standard equipments:
NSR Classic Series
Abarth 500



Narrowed sidewinder motor support

1249b	Red	Extra Hard
1247	Black	Medium
1248	White	Hard
1245	Yellow	Extra Light
1246	Blue	Soft

INLINE

Standard equipments:
NSR LMP Series
Mosler Inline Series




Inline motor support

1254	Red	Extra Hard
1252	Black	Medium
1253	White	Hard
1250	Yellow	Extra Light
1251	Blue	Soft

OPTIONAL

SIDEWINDER

For change configuration
GT - Rally Series




Triangular sidewinder motor support

1264	Red	Extra Hard
1262	Black	Medium
1263	White	Hard
1265	Yellow	Extra Light
1266	Blue	Soft

INLINE

Mosler chassis EVO 3



EVO2 Inline motor support

1244	Red	Extra Hard
1242	Black	Medium
1243	White	Hard
1240	Yellow	Extra Light
1241	Blue	Soft

SIDEWINDER

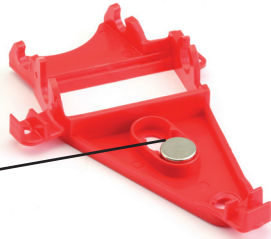
Mosler chassis EVO 3



EVO sidewinder motor support

1222	Red	Extra Hard
-------------	-----	------------

Based magnet adjustable in two or three positions



ANGLEWINDER

Mosler chassis EVO 3



Anglewinder motor support

1225	Black	Medium
1226	White	Hard
1227	Red	Extra Hard

Adjustable front axle



Mosler chassis EVO 5

Mosler chassis EVO 3

GUIDE DROP ARM

Standard equipments:
NSR GT - Rally - LMP Series (No Mosler)



Guide drop arm for Pickup - 64 mm

1234	Red	Extra Hard
1232	Black	Medium
1233	White	Hard

CUPS OF FIXING

Standard equipments:
NSR Classic Series
Abarth500 - Mosler EVO3

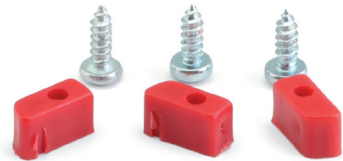


Plastic cup + screws for motor support

1204	3+3 pcs
------	---------

CUPS OF FIXING

Standard equipments:
NSR GT - Rally - LMP Series - Mosler EVO5

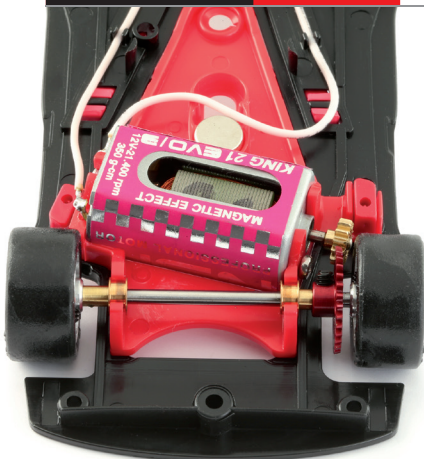


Plastic cup + screws for triangular motor support

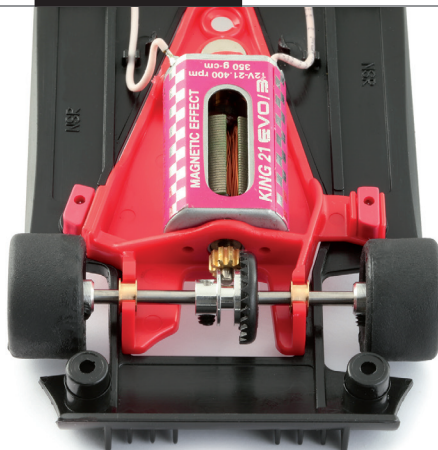
1231	3+3 pcs
------	---------

CONFIGURATION

ANGLEWINDER



INLINE



SIDEWINDER



MOTORS

SHARK - Short can - Both side holed

SHARK 20



20.000 rpm - 164 g•cm @ 12V

3004 3004IS
Box Stock NSR 3004F
Classic Series 3004N

SHARK 22



22.400 rpm - 168 g•cm @ 12V

3001 3001IS
Box Stock NSR 3001F
Rally Series 3001N

SHARK 25



25.000 rpm - 176 g•cm @ 12V

3003 3003IS
 3003F
 3003N

SHARK 30



30.000 rpm - 210 g•cm @ 12V

3002 3002IS
 3002F
 3002N

SHARK 40



40.000 rpm - 210 g•cm @ 12V

3005 3005IS
 3005F
 3005N

MOTOR	TYPE	DESCRIPTION
SHARK	IS	Short can w/wires + inline pignon for universal use
	F	Short can w/wires + sidewinder pignon for endbell drive
	N	Short can w/wires + sidewinder pignon for can drive
KING	L	Short can w/wires + inline pignon for universal use
	N	Short can w/wires + anglewinder pignon for AW Ninco



MOTORS

MAGNETIC EFFECT

KING - Long can

KING 21K EVO/3



21.400 rpm - 350 g•cm @ 12V

3023 3023L
3023N

Box Stock NSR
GT Series

KING 21K EVO/2



21.400 rpm - 322 g•cm @ 12V

3022 3022L
3022N

BABY KING 17K



17.000 rpm - 245 g•cm @ 12V

3024 3024L
3024N

SPANISH KING 19K



NO MAGNETIC

CLOSED CAN

19.000 rpm - 250 g•cm @ 12V

3025 3025L
3025N

KING 25K EVO



25.000 rpm - 350 g•cm @ 12V

3026 3026L
3026N

KING 30K EVO



30.000 rpm - 365 g•cm @ 12V

3027 3027L
3027N

KING 38K EVO



38.500 rpm - 365 g•cm @ 12V

3028 3028L
3028N

KING 38



NO MAGNETIC

38.500 rpm - 310 g•cm @ 12V

3015 3015L
3015N

KING 46K EVO



46.000 rpm - 365 g•cm @ 12V

3029 3029L
3029N

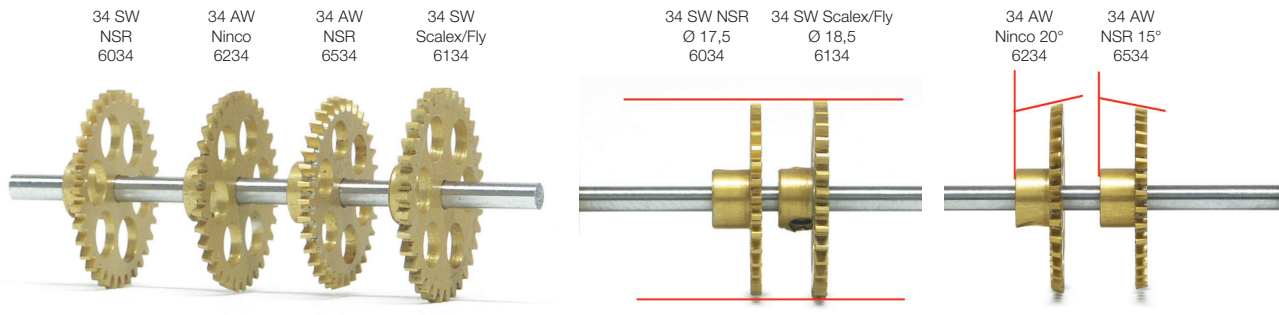
KING 50K EVO



50.000 rpm - 365 g•cm @ 12V

3030 3030L
3030N

3/32 ALUMINIUM GEARS



3/32" Extralight Aluminium Gears	Color	Teeth	SIDEWINDER		ANGLEWINDER	
			NSR SW Ø 17,5	Scalextric/Fly SW Ø 18,5	NSR AW Ø 16,8	Ninco AW Ø 17,5 <small>reverse teeth</small>
	Grey	28			6528	
	Green	29			6529	
	Electric Blue	30	6030		6530	
	Red	31	6031		6531	6231
	Black	32	6032		6532	6232
	Violet	33	6033		6533	6233
	Gold	34	6034	6134	6534	6234
	Blue	35	6035	6135		6235
	RK Grey	36	6036	6136		
	Dark Green	37	6037	6137		
	Bronze	38		6138		
Recommended Pinions			Ø 6,75 69xx or 72xx	Ø 6,75 69xx	Ø 7,5 71xx or 73xx	Ø 6,75 69xx







3/32" PLASTIC GEARS

ANGLEWINDER

3/32" Soft Plastic Gears	Color	Teeth	NSR AW Ø 16
			
	Yellow	26	6626
	White	27	6627
	Grey	28	6628
	Green	29	6629
	Blue	30	6630
	Red	31	6631
	Black	32	6632
	Violet	33	6633

Recommended Ø 7,5 Pinions - 71xx or 73xx


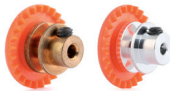

SIDEWINDER

3/32" Soft Plastic Gears	Color	Teeth	NSR SW Ø 17,5
			
	Blue	30	6430
	Red	31	6431
	Black	32	6432
	Violet	33	6433
	Gold	34	6434

Recommended Ø 6,8 Pinions - 69xx or 72xx

PINIONS

INLINE

3/32" Soft Plastic Gears	Teeth	Bronze	Aluminium
	24	6324BR	6324AL
	25	6325BR	6325AL
	27	6327BR	6327AL

Recommended Ø 5,5 Pinions - 68xx or 70xx

Sidewinder extralight - Ø 6,75

10	11	12	13
			
6910	6911	6912	6913

Sidewinder Soft Plastic - Ø 6,75

10	11	12	13
			
7210	7211	7212	7213

Anglewinder extralight - Ø 7,5

12	13	14	15
			
7112	7113	7114	7115

Anglewinder Soft Plastic - Ø 7,5

12	13	14	15
			
7312	7313	7314	7315

Inline extralight - Ø 5,5

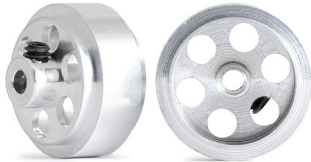
8	9	10	11
			
6808	6809	6810	6811

Inline easy setup - Ø 5,5

8	9	10	11
			
7008	7009	7010	7011

3/32 ALUMINIUM WHEELS

Ø 16



Front Ø 16 x 8 mm.

5001 Standard equipments:
Mosler MT 900 R
Classic Series

AIR-SYSTEM



Rear Ø 16 x 8 mm.

5002 Standard equipments:
Mosler MT 900 R
Classic Series

AIR-SYSTEM



Rear Ø 16 x 10 mm.

5015 Ultimate wheels
Larger & drilled

AIR-SYSTEM



Rear Ø 16 x 10 mm.

5016 Ultimate wheels
Larger

AIR-SYSTEM



Rear Ø 16 x 10 mm.

5018 Ultimate wheels
lowered
Larger & drilled

Ø 16,5

DRILLED



Front/Rear Ø 16,5 x 8 mm.

5009

Ø 17



Front Ø 17 x 8 mm.

5003 Standard equipments:
GT3 Series - Audi R18
Renault Clio - Abarth

AIR-SYSTEM



Rear Ø 17 x 8 mm.

5004 Standard equipments:
GT3 Series - Audi R18

AIR-SYSTEM



Rear Ø 16,5 x 8 mm.

5010 Drilled

1/24 - 3 mm. axle



Front Ø 17 x 8 mm.

5011 FOR SPONGE
IMCA
Nascar / Classic

1/24 - 3 mm. axle



Rear Ø 17 x 14 mm.

5012 FOR SPONGE
IMCA
Nascar / Classic

DRILLED



Rear Ø 17 x 10 mm.

5017 Ultimate wheels
Spanish rims
Larger & drilled

VARIOUS

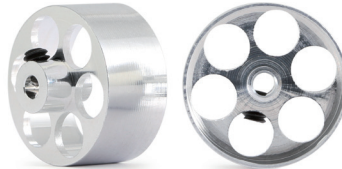
AIR-SYSTEM



Rear Ø 14,5 x 12,2 mm.

5005 Formula 1

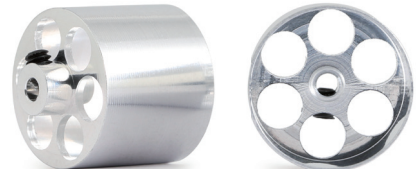
FOR SPONGE



Front Ø 17 x 8 mm.

5007 Ultralight
Truck Fly / TSRF

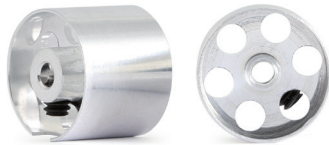
FOR SPONGE



Rear Ø 17 x 14 mm.

5008 Ultralight
Truck Fly / TSRF

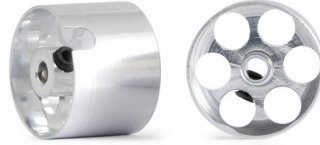
FOR SPONGE



Ø 13,3 x 11 mm.

5013 Ultralight

FOR SPONGE



Ø 14,7 x 11 mm.

5014 Ultralight

SET INSERT

BBS



For Ø 16 wheels

5421 White
5423 Black
5425 Silver
5427 Gold

4 pcs

For Ø 17 wheels

5422 White
5424 Black
5426 Silver

4 pcs

12 SPOKES



4 pcs

For Ø 17 wheels

5428 Red
5429 Blue
5430 Black
5431 White
5432 Silver

CLASSIC



For Ø 16 wheels

5433 Ford MK IV
5434 Porsche 917
5435 P68 Alan Mann
5436 Ford MK I/MK II GT40

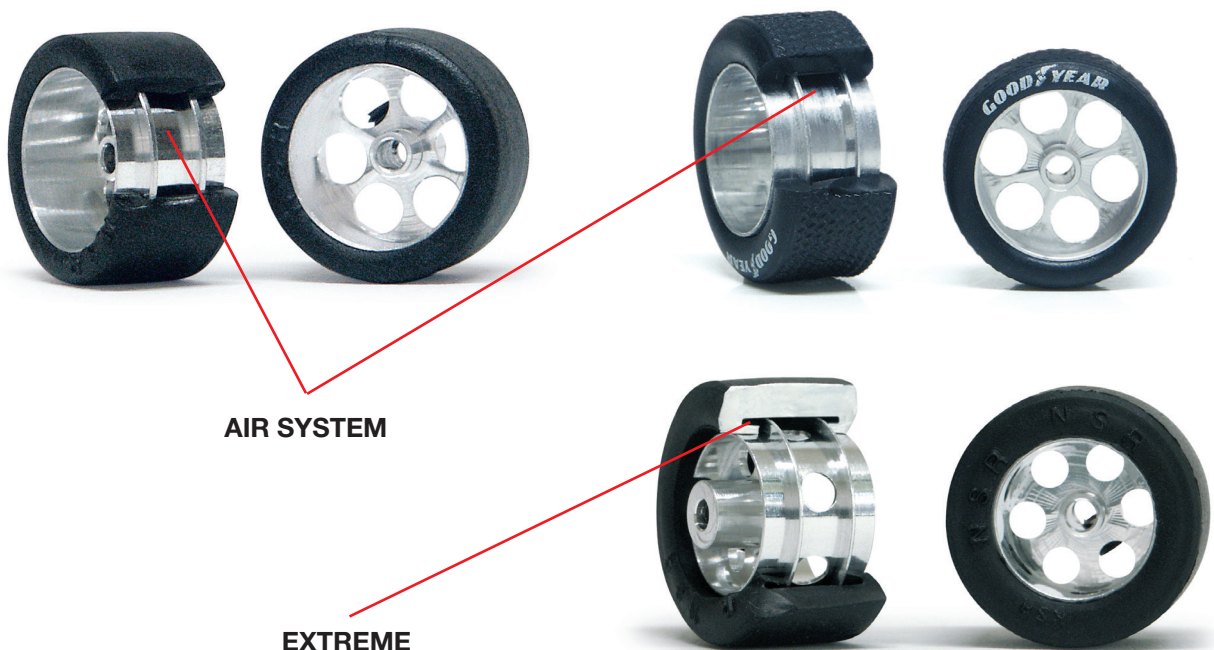
complete set (4+4)
complete set (4)
complete set (4+4)
complete set (4+4)

TIRES



The special aluminum rims with the **AIR SYSTEM** technology together with the soft compounds tyres guarantee an exceptional grip on any kind of track surface.

SUPERGRIP or ULTRAGRIP COMPOUNDS



Dimensions		Ø Wheels	FRONT No-friction	REAR Supergrip	REAR Ultragrip	REAR Extreme
17 x 8	Mosler Front	16" / 17"	5201 slick	5204 slick	5205 slick	
18 x 8		17"	5226 slick	5227 slick	5228 slick	
18 x 8,5		16"	5232 classic			
18,5 x 9	P68 Front	16"	5250 classic	5251 classic	5252 classic	
18,5 x 10	Porsche 917 Front	16"	5238 classic	5239 classic	5240 classic	
19 x 10	Clio-Abarth	16" / 17"	5202 slick	5206 slick	5207 slick	5302 slick
19,5 x 8	Abarth 500	17"	5247 slick	5248 slick	5249 slick	
19,5 x 10		16,5"		5271 slick	5270 slick	
19,5 x 12	Mosler Rear	16"		5210 slick	5211 slick	5304 slick
20 x 8,5	Ford MK IV Front	16"	5233 classic	5234 classic	5235 classic	
20 x 10		16"		5208 slick	5209 slick	5303 slick
20 x 11	GT3 Series	17"	5229 slick	5230 slick	5231 slick	
20 x 12		16"		5212 slick	5213 slick	
20,5 x 10	P68 Rear	16"		5253 classic	5254 classic	
20,5 x 11,5		17"		5214 slick	5215 slick	
21 x 10	Ford MK IV Rear	16"		5236 classic	5237 classic	
21 x 11	Porsche 917 Rear	16"		5241 classic	5242 classic	
21 x 11,5		17"		5216 slick	5217 slick	5305 slick

Dimensions	For Wheels	FRONT No-friction	REAR Supergrip	REAR Ultragrip	REAR Extreme
20 x 13	5005 Formula 1 or Ninco F1		5220 F1	5221 F1	5307
21 x 12	Only 17" or plastic Fly Cl.		5218 classic	5219 classic	5306 classic
21 x 14	5006 - Vanquish		5222 slick	5223 slick	5309 slick
24 x 12 (x 11 mm in.)	Vintage 12"		5243 slick	5244 slick	5312 slick
26 x 14 (x 12 mm in.)	Vintage 13"		5245 slick	5246 slick	5313 slick
26 x 14 (x 15 mm in.)	5008 / 5012 17"		5224 slick	5225 slick	5308 slick
27 x 8 (x 16 mm in.)	5007 / 5011 17"	5203 slick	5255 slick	5256 slick	
19,5 x 12	For race only				5311 slick
20 x 12	You must glue on 5015-5016				5301 slick

NSR CHAMPIONSHIP TIRES



24h WRE Classic



GT3 Series - Club



24h WRE Classic
+ 5002 wheels

Dimensions	Ø Wheels	Race	Tires Code
20 x 10	5002	24h WRE Classic	5259 slick
20 x 11	5004	GT3 Series - Club	5258 slick

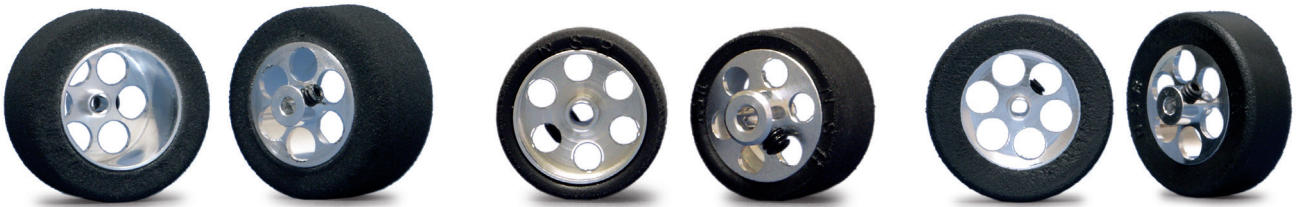
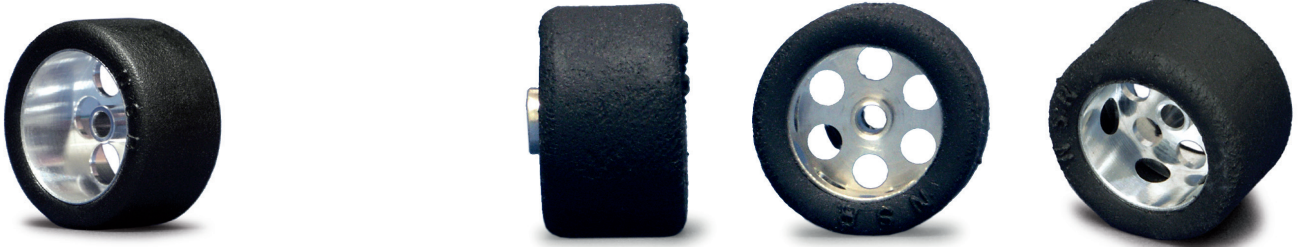
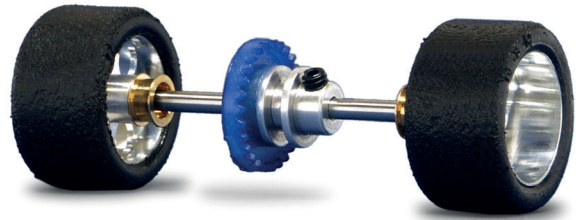


GT3 Series - Club
+ 5004 wheels

READY TO RACE

REAR KIT

TRUED TIRES



5008 + sponge = 9018

5001 + 5201 = 9001

5007 + 5203 = 9017











Dimensions	Ø Wheels	Wheels code	Tires code	Ø hole rims hub	Code
17 x 8	16"	5001	5201	3/32"	9001
18 x 8	17"	5003	5226	3/32"	9003
18,5 x 10	16"	5001	5202	3/32"	9002
19 x 10	17"	5003	5202	3/32"	9004
19 x 10	16"	5002	5207	3/32"	9005
19 x 10	17"	5004	5207	3/32"	9009
19 x 11	17"	5004	5231	3/32"	9023
19 x 11	16"	5002	5211	3/32"	9007
19 x 12	16"	5015	5311	3/32"	9026
19 x 12	16"	5016	5311	3/32"	9027
19 x 12	16"	5002	5209	3/32"	9006
19,5 x 13	14,5"	5005	5221	3/32"	9012
20 x 10	17"	5004	5209	3/32"	9010
20 x 10	16"	5002	5259 G	3/32"	9030
20 x 10	16"	5002	5303	3/32"	9032
20 x 11,5	13,3"	5013	Sponge	3/32"	9024
20 x 12	16"	5002	5213	3/32"	9008
20 x 12	16"	5015	5301	3/32"	9028
20 x 12	16"	5016	5301	3/32"	9029
20,2 x 11	17"	5004	5258 G	3/32"	9031
20,3 x 11,5	17"	5004	5215	3/32"	9014
20,5 x 11,5	17"	5004	5217	3/32"	9011
21 x 11	14,7"	5014	Sponge	3/32"	9025
24,2 x 8	17"	5007	5203	3/32"	9017
25,5 x 14	17"	5008	5225	3/32"	9019
26 x 14	17"	5008	Sponge	3/32"	9018
26 x 8	17"	5011	5203	3 mm	9020
28 x 14	17"	5012	Sponge	3 mm	9021
28 x 14	17"	5012	5225	3 mm	9022

Code

4001	REAR KIT w/ 16" Diameter Wheels type	INLINE CARS
4002	REAR KIT w/ 16" Diameter Wheels type	SIDEW SCALEXTRIC/FLY
4003	REAR KIT w/ 16" Diameter Wheels type	ANGLEW NINCO
4009	REAR KIT w/ 16" Diameter Wheels type	SIDEW NSR
4011	REAR KIT w/ 17" Diameter Wheels type	INLINE CARS
4012	REAR KIT w/ 17" Diameter Wheels type	SIDEW SCALEXTRIC/FLY
4013	REAR KIT w/ 17" Diameter Wheels type	ANGLEW NINCO
4017	REAR KIT	Formula 1 INLINE
4019	REAR KIT w/ 17" Diameter Wheels type	SIDEW NSR
4201	FRONT+REAR KIT w/ 16" Diameter Wheels type	INLINE CARS
4202	FRONT+REAR KIT w/ 16" Diameter Wheels type	SIDEW SCALEXTRIC/FLY
4203	FRONT+REAR KIT w/ 16" Diameter Wheels type	ANGLEW NINCO + pinion
4204	FRONT+REAR KIT w/ 16" Diameter Wheels type	SIDEW PROSLOT
4209	FRONT+REAR KIT w/ 16" Diameter Wheels type	SIDEW NSR
4211	FRONT+REAR KIT w/ 17" Diameter Wheels type	INLINE CARS
4212	FRONT+REAR KIT w/ 17" Diameter Wheels type	SIDEW SCALEXTRIC/FLY
4213	FRONT+REAR KIT w/ 17" Diameter Wheels type	ANGLEW NINCO + pinion
4216	FRONT+REAR KIT for FLY CLASSIC ITALIAN Championship (11/36+front 16"+rear 17")	
4219	FRONT+REAR KIT w/ 17" Diameter Wheels type	SIDEW NSR



SPARE PARTS

<p>RACING PICKUP GUIDE</p>  <p>Low profile - Low friction</p> <p>4841 Box Stock NSR GT-Classic Series</p>	<p>RALLY PICKUP GUIDE</p>  <p>Low profile - Low friction - Long stem</p> <p>4842</p>	<p>LONGER BLADE GUIDE</p>  <p>Low profile - Low friction Longer blade</p> <p>4843 For longer wheelbase</p>
<p>SCREW PICKUP GUIDE</p>  <p>Low profile - Low friction Longer blade - Lowered</p> <p>4844 For longer wheelbase</p>	<p>COPPER BRAIDS</p>  <p>Super Racing copper braids</p> <p>4822 10 pcs</p>	<p>COPPER BRAIDS</p>  <p>Super Racing copper braids</p> <p>4838 1 mt.</p>
<p>TIN PLATED BRAIDS</p>  <p>Tin plated copper braids</p> <p>4849 10 pcs</p>	<p>TIN PLATED BRAIDS</p>  <p>Tin plated copper braids</p> <p>4850 1 mt.</p>	<p>BRASS CUP</p>  <p>For motor wire</p> <p>4821 10 pcs</p>
<p>MOTOR WIRE</p>  <p>Silicone extra-flexible motor wire</p> <p>4823 30 cm. / 0,25 qmm + 2 brass cup 4824 1 mt. / 0,25 qmm + 10 brass cup</p>  <p>4825 30 cm. / 0,75 qmm 4826 1 mt. / 0,75 qmm</p>		<p>MAGNET</p>  <p>Super Neodymium magnet round</p> <p>4827 4 mm. / 2 pcs 4828 5 mm. / 2 pcs</p>

SPARE PARTS

SUSPENSIONS



for motor mount 122x - 124x

1209	Soft springs
1210	Medium springs
1211	Hard springs

SUSPENSIONS - TRIA



for triangular motor mount 125x / 126x

1228	Soft springs
1229	Medium springs
1230	Hard springs

SPRINGS



Complete springs set

1208	3 pcs Soft
	3 pcs Medium
	3 pcs Hard

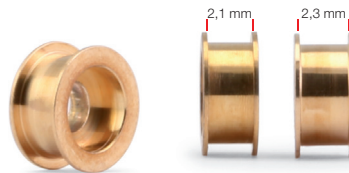
AXLES



3/32" Hard steel axle

4801	49 mm.
4802	55 mm.

BUSHINGS



3/32" autolubricant no friction oilless

4803	NSR box stock cars
4846	for NSR Classic series
4847	for NSR GT-Rally series

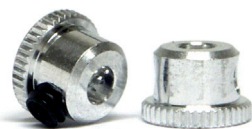
SPECIAL BUSHINGS



autolubricant & no friction oilless

4804	2.5 mm for Ninco axles
4807	2.5 mm for MG-Vanguish
4806	3/32" for MG-Vanguish

STOPPER



3/32" axle stopper

4848	2 pcs
-------------	-------

PLASTIC SPACERS



3/32" axle plastic spacers

4853	2 mm 10 pcs
4854	4 mm 10 pcs

PICK-UP SPACERS



Pick-up guide brass spacers

4818	0,005"/0.12 mm 10 pcs
4819	0,010"/0.25 mm 10 pcs
4820	0,020"/0.50 mm 10 pcs

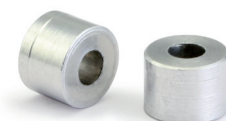
BRASS SPACERS



3/23" axle brass spacers

4810	0,005"/0.12 mm - 10 pcs	4815	0,080"/2.00 mm - 10 pcs
4811	0,010"/0.25 mm - 10 pcs	4816	0,100"/2.50 mm - 10 pcs
4812	0,020"/0.50 mm - 10 pcs	4817	0,120"/3.00 mm - 10 pcs
4813	0,040"/1.00 mm - 10 pcs	4855	0,160"/4.00 mm - 10 pcs
4814	0,060"/1.50 mm - 10 pcs		

ALUMINUM SPACERS



3/32" axle aluminum spacers

4840	0,160"/4 mm - 10 pcs
-------------	----------------------

ACCESSORIES

SREW SET

STANDARD SCREW



4833 2.2 x 6.5 mm - 10 pcs
4835 2.2 x 9.5 mm - 10 pcs

BODY SCREW



Metric screw 10 pcs

4836 M2.2 x 8 mm partially threaded
4839 M2.2 x 6.5 mm partially threaded

SUSPENSION SCREW



Metric suspension screw 10 pcs

4837 M2.2 x 9.5 mm partially threaded

MOTOR SCREW



10 pcs

4851 M2 x 3 mm for long can motor

PICKUP SCREW



10 pcs

4852 M2 x 4 mm for pickup guide 4844

ALLEN SCREW



For gears/wheels/chassis

4808 0,050" - 10 pcs
4809 0,064" for 3 mm axle - 10 pcs

TOOLS

WRENCH

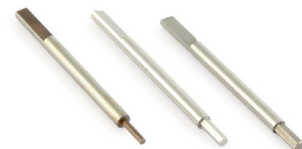


Aluminum wrench - hard steel - replaceable steel tip



4411 BLUE 0.95 mm for M2 screws
4412 VIOLET 0.050" for NSR screws
4413 0.050" hole for nut
4414 SILVER 0.064"
4415 0.064" hole for nut
4416 0.084"
4417 0.084" hole for nut

STEEL TIP



Replacement hard steel tip

4421 0.95 mm M2
4422 0.050" for NSR screws
4423 0.064" - 1.5 mm
4424 0.084" - 2 mm

BIG BAG



1791 Internal sponge
 LxHxP = 320x240x60 mm

MEDIUM BAG



1991 Red LxHxP = 235x180x45 mm
1992 Black LxHxP = 235x175x75 mm

SHOWCASE



1203



The Power to Surprise

101 Spirit KIA



Kiaite.com.au
Executive Homes

FRAZER

DUNLOP

COX

GLOBAL GROUP

2 MM AXLE DIAMETER








Reducing rotating masses
...More performance.



AXLES		BUSHINGS		ALLUMINIUM WHEELS	
 <p>Hard steel axle</p> <p>2004802 55 mm.</p>		 <p>autolubricant no friction oilless</p> <p>2004803</p>		<p>Ø 16</p>  <p>Ø 16 x 10 mm.</p> <p>2005018 Ultimate wheels Larger & drilled</p>	
<p>STOPPER</p>  <p>axle stopper</p> <p>2004848 2 pcs</p>		<p>AXLE SPACERS</p>  <p>axle spacers</p> <p>2004811 0,010"/0.25 mm - 10 pcs 2004812 0,020"/0.50 mm - 10 pcs 2004813 0,040"/1.00 mm - 10 pcs 2004815 0,080"/2.00 mm - 10 pcs</p>		<p>Ø 17</p>  <p>Ø 17 x 8 mm.</p> <p>2005017 Ultimate wheels Spanish rims Larger & drilled</p>	







2 MM PLASTIC GEARS

ANGLEWINDER

2 mm Soft Plastic Gears	Color	Teeth	NSR AW Ø 16
			
	Yellow	26	2006626
	White	27	2006627
	Grey	28	2006628
	Green	29	2006629
	Blue	30	2006630
	Red	31	2006631
	Black	32	2006632
	Violet	33	2006633

Recommended Ø 7,5 Pinions - 71xx or 73xx

SIDEWINDER

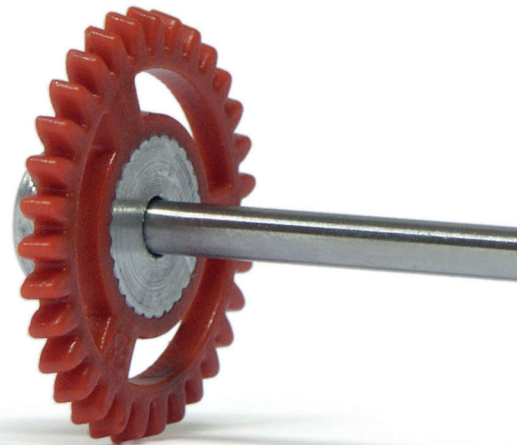
2 mm Soft Plastic Gears	Color	Teeth	NSR SwW Ø 17,5
			
	Blue	30	2006430
	Red	31	2006431
	Black	32	2006432
	Violet	33	2006433
	Gold	34	2006434

Recommended Ø 6,8 Pinions - 69xx or 72xx

INLINE

2 mm Soft Plastic Gears	Teeth	Bronze	Aluminium
	24	2006324BR	2006324AL
	25	2006325BR	2006325AL
	27	2006327BR	2006327AL

Recommended Ø 5,5 Pinions - 68xx or 70xx



CLEANING / LUBRICANT OIL GREASE

TIRE TRACTION GLUE

LIGHT



Tire traction glue - Light

4601

30 ml

MEDIUM



Tire traction glue - Medium

4602

30 ml

HARD



Tire traction glue - Hard

4603

30 ml

OIL

RUBBER TIRES



Oil for rubber tires treatment

4605

30 ml

BRONZE BUSHINGS



Oil for bronze bushings high temperature

4606

30 ml

BALL BEARINGS



Oil for ball bearings high temperature

4607

30 ml

GREASE

PLASTIC



Special grease lubricant for plastic gears

4608

5 gr.

METAL



Special grease lubricant for metal gears

4609

5 gr.

CLEANING

BRAIDS



Braids conditioner

4604

30 ml

CONTROLLER

ELECTRONIC CONTROLLER

2001

Interchangeable chip

BRAKE CIRCUIT SWITCH:
on = brake pot works
off = highest brake as circuit is jumped

Same controller for whatever type of cars, professional or plastic or model cars. Replacing the two chips with others having different values to modify the power diagram.

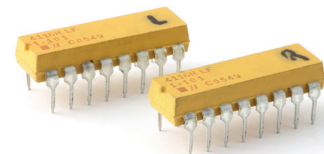
HOW TO SET THE BRAKE POT
Rotation is clockwise:
STEP 0 = MINIMUM BRAKE
Rotating clockwise you INCREASE BRAKE
STEP 10 = MAXIMUM BRAKE

HOW TO SET THE SENSITIVITY POT
Rotation is clockwise:
STEP 0 = MAXIMUM SENSITIVITY (fastest)
Rotating clockwise you DECREASE SENSITIVITY
STEP 10 = MINIMUM SENSITIVITY (slowest)

HOW TO USE THE TRACTION CONTROL POT
Rotation is clockwise:
STEP 0 = NO TRACTION CONTROL
You are driving without help by Traction Control
Rotating clockwise you USE AND INCREASE Traction Control
You need to set "amount" (percentage) of Traction Control
Traction Control helps you to drive at the exit of corners.
STEP 10 = MAXIMUM TRACTION CONTROL

CHIP SET

Type	Utilisation	Code
005	Eurosport / wing car (4 chips)	2601
007	Eurosport - X12 (4 chips)	2602
100	X12 - S16 - D16	2603
220	X12 - S16 - D16	2604
330	D16	2605
470	Faster model car	2606
560	Model car	2607
680	Model car	2608
820	Faster plastic racing car (w/magnet) - Model car	2609
101	Faster plastic racing car - Model car	2610
151	Plastic car	2611
221	Plastic car	2612
331	Twisted track - Rally	2613
471	Twisted track - Rally	2614



DISTRIBUTORS

<p>AUSTRALIA</p> <p>Thunderbird Slot Racing Unit 6 / 91 Research Road - Pooraka 5095 South Australia, Australia Phone: 08 8262 2262 - 0419849710 info@tbirdslotracing.com.au www.tbirdslotracing.com.au</p>	<p>ITALY</p> <p>Model Assistance s.r.l. Via Guadiana 24 42124 Reggio Emilia - Italy Phone +39 0522 942873 - Fax +39 0522 942874 info@modelassistance.it www.radiokontrol.it</p>	<p>SPAIN - PORTUGAL</p> <p>NSR s.r.l. Zona Industriale 84095 Giffoni Valle Piana - Salerno - Italy Phone +39 089 868784 - Fax +39 089 982887 Mobile +39 348 6939697 info@nsrslot.com - www.nsrslot.it</p>
<p>AUSTRIA - BENELUX</p> <p>Eicker Racing Tersteegenstraße 25 42653 Solingen - GERMANY Phone +49-212-383920 - Fax +49-212-3839229 info@eicker.de - www.eicker.de www.facebook.com/eickerracing</p>	<p>NEW ZEALAND</p> <p>Slotcar Ltd. shop 9, 5 George Street Whakatane 3120 Bay of Plenty, New Zealand Phone +64 7 3072000 service@slotcar.co.nz www.slotcar.co.nz</p>	<p>SWEDEN</p> <p>Slotcar 4 Fun Sandgatan 10 240 14 VEBEROD - Sweden Phone +46 730 584 995 leif.johansson@slotcar4fun.se www.slotcar4fun.se</p>
<p>CHINA</p> <p>KEN LO Iron Hero Corp. No.26, Aly. 24, Ln. 158, Guoji Rd., Tucheng Dist., New Taipei City 236, Taiwan (R.O.C.) Tel: 886-287321133 #17 - 886-932908781 kenlo@iron-hero.com Skype: kenlo3202@hotmail.com - QQ:2226158268</p>	<p>Tony Cook 537 Main Road Hope RD1 Brightwater 7091 Nelson, New Zealand Phone (03) 544 5160 ford29@vodafone.co.nz</p>	<p>SWITZERLAND</p> <p>ORS KART RACING Orsetti Avenue des Pâquiers 22 2072 Saint-Blaise - SWITZERLAND +41 32 753 02 25 scx@orskartesting.com www.orskartesting.com</p>
<p>CZECH REPUBLIC - SLOVAKIA</p> <p>Autodrahy Info Jana Zednickova Chrastany 5 - 411 15 Podsedice - Czech Republic info@autodrahy.info</p>	<p>NORTH AMERICA</p> <p>Professor Motor Inc. 1235 Industrial Drive STE #10 Saline, MI 48176-1742 - USA Phone (734) 316-2177 support@professormotor.com</p>	<p>SOUTH AFRICA</p> <p>SlotCarStuff P.O. Box 28126 Bothasig 7406 - Western Cape - Sud Africa Phone Andre +27832554146 Dean +27845588873 nsr.dealer.rsa@gmail.com www.slotcar.co.za</p>
<p>FRANCE</p> <p>Fair International 296 route de Vannes 44700 ORVAULT - FRANCE Phone: 06.13.50.10.77 fairslot@wanadoo.fr</p>	<p>NORWAY</p> <p>Oddvar Uddu Trønderfrim Frimerker og Hobby St. Olavs gt 11 7012 Trondheim - Norway Tel. 4773520840 ouddu@online.no www.tronderfrim.no</p>	<p>SOUTH AMERICA</p> <p>B52 Autorama Phone +551144252758 b52grp7@gmail.com</p>
<p>GERMANY - POLAND</p> <p>Eicker Racing Tersteegenstraße 25 42653 Solingen - GERMANY Phone +49-212-383920 - Fax +49-212-3839229 info@eicker.de - www.eicker.de www.facebook.com/eickerracing</p>	<p>SINGAPORE - MALAYSIA INDONESIA - THAILANDIA - VIETNAM</p> <p>Adrian Lee Intrigg Hobbies 410 Joo Chiat Road Singapore 427636 Phone: +65 6996-1238 www.intrigg-hobbies.com enquiries@intrigg-hobbies.com</p>	<p>UNITED KINGDOM</p> <p>Gaugemaster Ford Road - Arundel BN18 0BN West Sussex - UK Phone: 01903 884321 - Fax: 01903 884377 ian.fowler@gaugemaster.co.uk www.gaugemaster.com</p>
<p>GREECE</p> <p>Creative Hobby Vrilission 17 str. - Penteli 15236 Athens Phone: 00302106135518 - Mobile: 00306777204530 nisko@creativehobby.gr & nisko@otenet.gr www.creativehobby.gr</p>		



Zona Industriale - 84095 Giffoni Valle Piana - SALERNO - ITALY
Phone +39 089 868784 - Fax +39 089 982887
info@nsrslot.com

 www.facebook.com/NSRfactory

www.nsrslot.it